

# MLT 845 H Turbo LSU

**Lift capacity** .....4500 kg  
 at 500 mm from forks heels  
 Tipping load  
 at maximum reach .....1610 kg  
 Tear out force with digging bucket  
 to ISO 8313.....6650 daN

**Lift height** .....7.55 m  
**Times** : unladen/loaded (in s)  
 Lifting.....9.6/10.4  
 Lowering .....6.1/5.6  
 Boom extension.....9.8/10.1  
 Boom retraction.....7.8/7.9  
 Time unladen (in s)  
 Crowd.....3.7  
 Dump .....3.2

**Tyres**  
 445/70 R 24 MPT IT 510

**Forks (mm)**  
 Length.....1200  
 Width x thickness .....125 x 50  
 Maximum distance between forks.....1040  
 Carriage rotation.....142°

**Multidisc brakes hydraulically assisted on both axles**  
**Negative parking brake (electro-hydraulic)**

**Perkins engine**  
 Turbo 120 : 1104 C - 44 T.....4 cylindres 4400 cm<sup>3</sup>  
 Power (ISO TR 14396) .....101 HP/74.5 kw  
 Maximum torque .....412 Nm at 1400 rpm  
 Direct injection  
 Water cooling

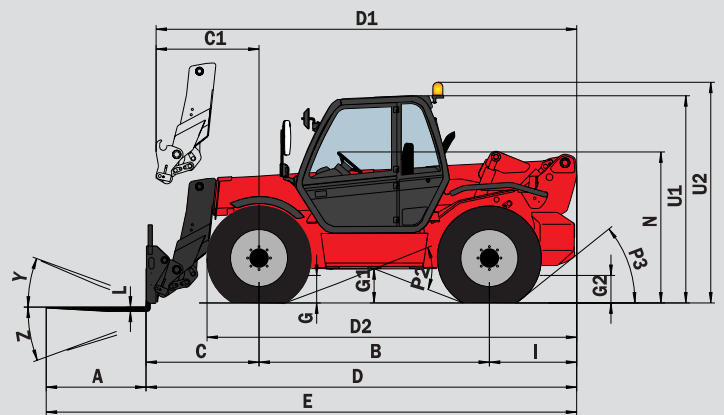
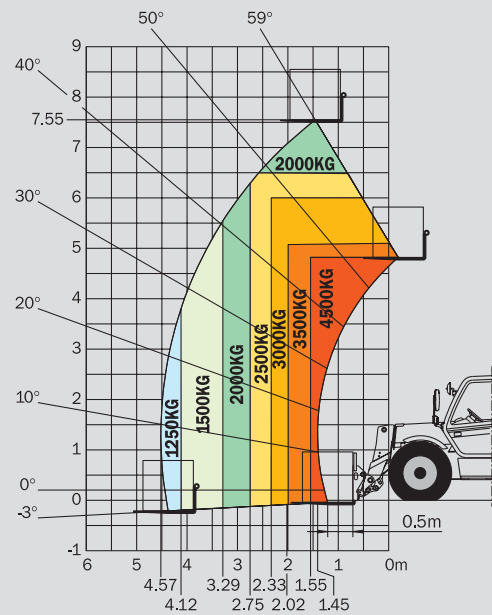
**Transmission** .....hydrostatic  
 Electro - hydraulic reversing shift  
 4 speeds forward and 2 reverse  
 Maximum travel speed .....25 km/h\*

**LSU** :.....150 l./mn - 270 bars  
 Load Sensing pump with electronic control  
 Electro proportional command monolever  
 Flow divider with load sensing device driving and braking

**Capacities**  
 Cooling system.....21 l.  
 Engine oil .....11 l.  
 Hydraulic oil .....126 l.  
 Transmission oil .....2 l.  
 Fuel tank .....135 l.

**Weight unladen (with forks)** .....8870 kg  
**Overall width** .....2.39 m  
**Overall height** .....2.59 m  
**Turning radius (outside wheels)** .....4.15 m  
**Overall length** .....5.23 m  
**Ground clearance** .....0.44 m  
**Drawbar pull**.....8200 daN

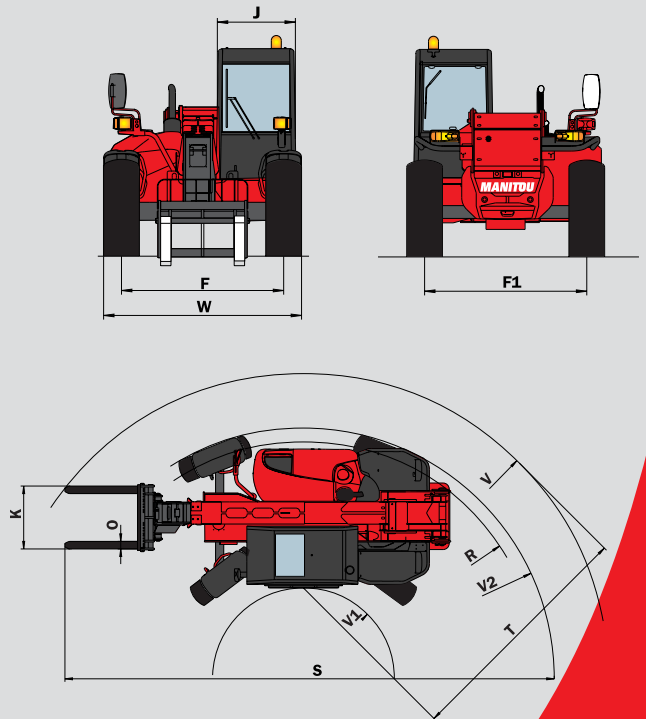
Under  
 EN 1459  
 annexe B



MLT 845 HT LSU

A	1200
B	2770
C	1394
C1	1487
D	5214
D1	5307
D2	4395
E	6414
F	1950
F1	1950
G	440
G1	435
G2	440
I	1050
J	950
K	1040
L	50
N	1850/1900
O	125
P2	43.5°
P3	40°
R	3930
S	8131
T	3620
U1	2565
U2	2745
V	5090
V1	1470
V2	4153
W	2395
Y	12°
Z	130°

mm



This publication in no way constitutes an offer and the company reserves the right to alter specification without prior notice.  
 The MANITOU models presented in this brochure can be supplied complete with optional equipment attachments.  
 PATENTS FR 93 14367 - EP 0 656 315 - US PENDING

