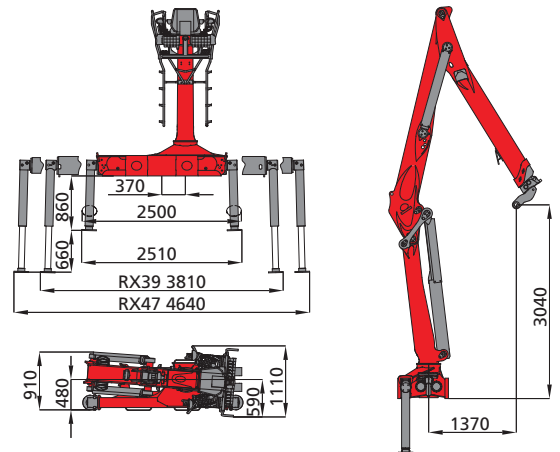
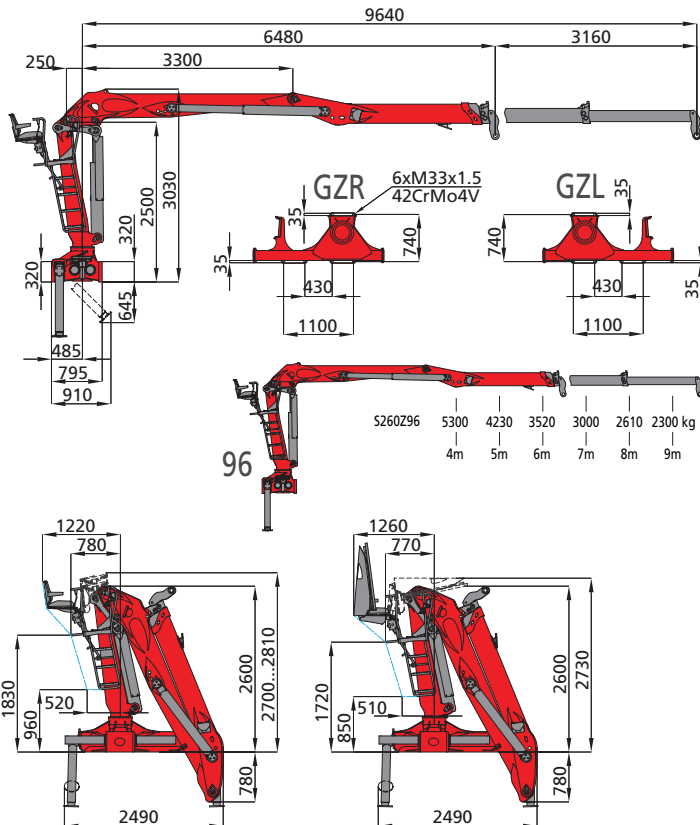


S-CLASS
2-CRANES



crane type	S260Z	
boom system	96	
lifting moment net	[kNm]	212
slewing torque net	[kNm]	36
slewing angle	[°]	385
max. outreach	[m]	9,6
operating pressure	[bar]	260
recommended pump capacity	2K [l/min]	2x90
dead weight without link / rotator	[kg]	3100

lifted weight, net without accessories